

The background of the top two-thirds of the page is a teal-colored pattern of interlocking puzzle pieces. The pieces are arranged to form a large, stylized globe in the center-left, with the rest of the space filled with smaller puzzle pieces.

**WE'RE ALL
IN THIS
TOGETHER.**

2015 ANNUAL REPORT

A LETTER FROM OUR CHAIRMAN

The Harris County Hospital District Foundation (HCHD Foundation) has continued to gather friends and funding for programs and services for Harris Health System. These programs serve those in need of healthcare and without other healthcare choice. We all know someone who has experienced healthcare at Harris Health such as: the elderly who worked all their lives and now find themselves in need; the neighbors who have lost their jobs due to illness and other issues, but still have demands for healthcare needs; children who find themselves without healthcare – all of these community members and more find themselves at Harris Health System. The HCHD Foundation is pleased to know that Harris Health System in its clinics and hospitals are staffed by excellent medical partners, Baylor College of Medicine and UT Medical School.

The 2014 annual report highlights some of the HCHD Foundation's accomplishments in partnering, funding and leading program grants supporting these efforts. The HCHD Foundation is very grateful for our philanthropic partners – corporations, individuals and foundations – who have joined us to assist those in our community with health issues.

Our signature events continue to provide sources for both funding and friends. This new awareness allows for the support from the community to grow. We are thankful to those who volunteer and partner with the Foundation in many ways to make these events happen. It takes hundreds of hours to produce an event and we cannot do this without our volunteers. We Thank Our Volunteers! And we ask that you consider becoming a volunteer with the Foundation.

Highlights from 2014 include our Texas Med Fun Run which supports the Immunization Outreach Program also known as "TroubleShooters." This year's event was the largest funding ever due to the support of our underwriters, and will allow thousands of immunizations to be given to both the young and the elderly of our community! Additionally, our SCRUBS young professional group held its annual Cinco de Bingo. More young people than ever before gathered to play Bingo for charity. The 2014 Silver Tea helped us continue our role of supporting nurse education at Harris Health. And of course, we held several educational tours of Harris Health through our "Day in the District" program. These programs have become very popular and do highlight the work of our Harris Health team members as well as the medical partners. Contact the Foundation if you are interested in attending one of these very worthwhile events. Educating the community through these tours and events to create more ambassadors is a continual goal.

With your support we can continue to make a difference in the healthcare of the indigent and vulnerable members of our community.

BEST WISHES, HENRY J. N. TAUB II

2015 BOARD OF TRUSTEES

HENRY J. N. TAUB II
Chairman

ELVIN FRANKLIN, JR.
Vice-Chairman

MATTHEW PLUMMER, JR., DMD
Vice-Chairman

LAURA D. DALE
President

CYNTHIA ADKINS
Vice President

ALGENITA SCOTT DAVIS
Vice President

WEA H. LEE
Vice President

DONALD BLAKE
Treasurer

MEREDITH T. CULLEN
Assistant Treasurer

WANDA LEBLANC
Assistant Treasurer

ASHA SETH KAPADIA, PHD
Secretary

KAREN TSO
Assistant Secretary

MICHAEL CHADWICK

DENIS DEBAKEY

ROLAND GARCIA, JR.

JAY R. HOUREN

KENNETH L. MATTOX, MD, FACS

VIRGINIA MITHOFF

REGINA ROGERS

Emeritus
DOROTHY CARAM, ED. D.

CAROLYN FARB
BARBARA SCHACHTEL, PHD

MARC J. SHAPIRO

Vice-Chairman Emeritus
LARRY L. MATHIS

Past Chairmen
QUENTIN R. MEASE
H. BEN TAUB

Ex-Officio
JUDGE ED EMMETT
GEORGE MASI
RUTH E. RANSOM

Honorary
GERALD D. HINES

General Counsel
ANNETTE TRIPP



“

TOGETHER WITH THE HARRIS HEALTH SYSTEM, THE HCHD FOUNDATION PROVIDES FUNDING FOR PROGRAMS SUPPORTING THE HEALTH OF OUR COMMUNITY. ”

Executive Director
RUTH E. RANSOM

Grant Director
PATRICIA SPENCER

Operations Manager
CAROLYN AMOS

Senior Accountant
LEAH ARNOLD

Database Specialist
DENISE DE LA GARZA

Administrative Assistant
BRITNEY WASHINGTON-JONES

FOUNDATION STAFF



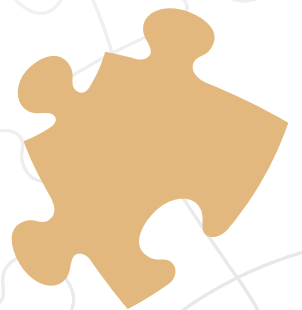
TROUBLE SHOOTING FOR HEALTH.

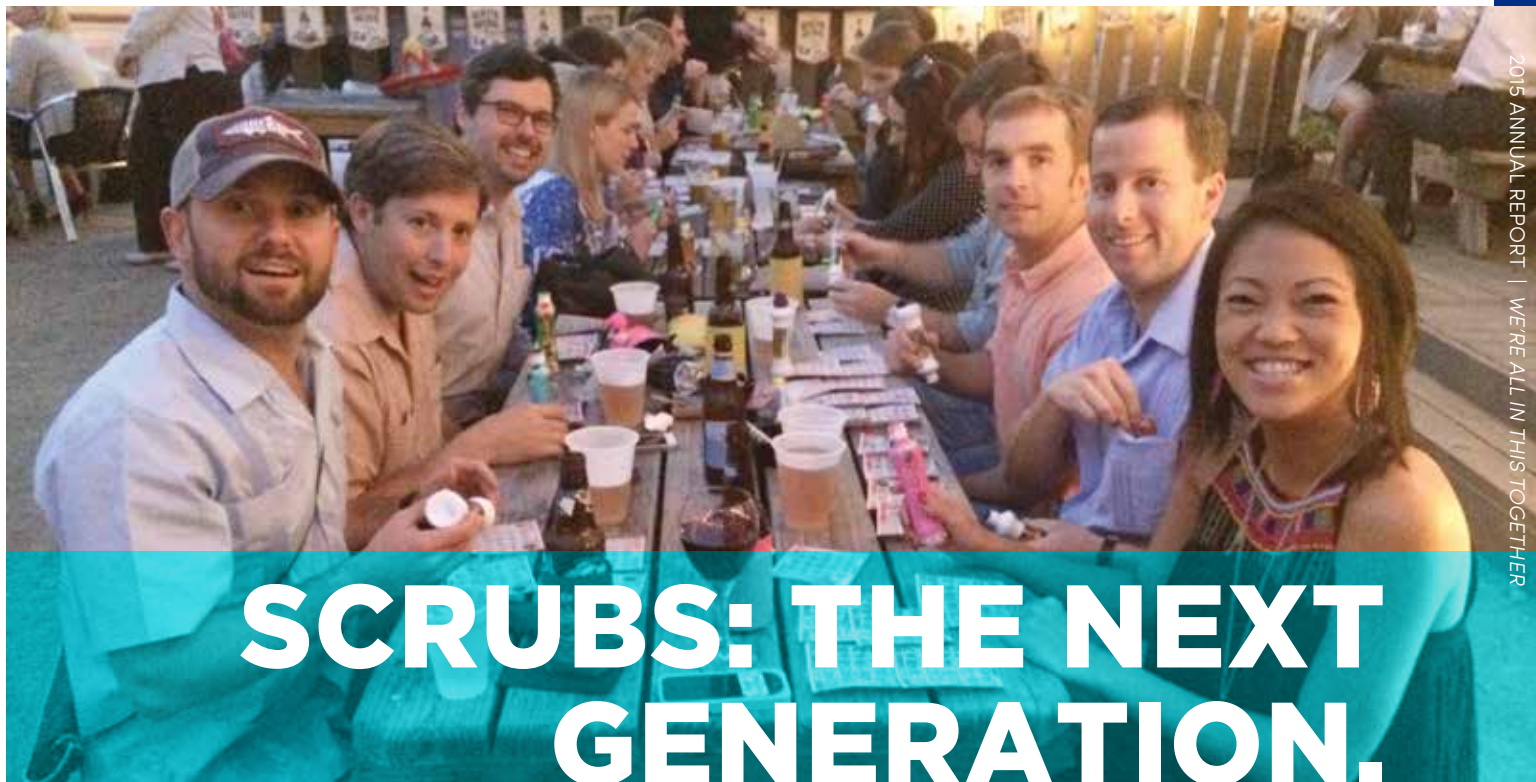
Our 13th annual run supported the immunization outreach program and the Troubleshooters van. This year the run had more than 1,000 attendees participating in all the run and walk options. There were more than 20 vendors choices for food, music, drinks and frivolity. There was even a rock climbing wall for all kids who dared to

participate! The weather was better than ever. Thanks to all participants, our vendors and our sponsors we were able to provide more support than ever to the outreach program.

Trouble Shooters and the immunization outreach program are an important way the community is supported by Harris Health. Each year Trouble Shooters visits hundreds of locations around the county to provide immunizations for children and those families most in need. This benefits both those receiving the vaccine and the vulnerable that are not able to be vaccinated due to life threatening health issues. Everyone benefits from prevention of those diseases that can be prevented by vaccine.

The Trouble Shooters van operates primarily in the northeast and southeast sections of the County as they are the areas with the lowest health indicators. The goal is to reduce the number of health disabilities and deaths from infections from the flu, chicken pox, measles, whooping cough and other preventable illnesses.





SCRUBS: THE NEXT GENERATION.



The HCHD Foundation is very pleased to have a young professionals support group – SCRUBS. SCRUBS formed to assist the next generation help those in need within the safety net system. The SCRUBS Steering Committee consists of many who have family members in healthcare and others who simply see the needs in our community. The expectations are to raise awareness for programs within the Harris Health System by providing volunteer projects, through social events, and fundraising.

BINGO! The famous word of the night at the 4th Annual Cinco de Bingo event hosted by SCRUBS, held at Jackson's Watering Hole had over 200 participants playing bingo to win great prizes and raising over \$20,000. There was never a dull moment when bingo caller Ryan Soroka co-founder of Eatsie Boys and 8th Wonder Brewery kept the crowd entertained during and between games.

Direction of the proceeds from Cinco de Bingo are determined by the SCRUBS group and this year benefited the Harris Health System's Ben Taub Hospital's Adolescent Intensive

Outpatient Behavioral Health Treatment Program-Adolescents in Motion (AIM).

The AIM program counsels and educates youth 13-17 years who suffer from emotional issues such as depression, anxiety, disruptive behavior disorders that interfere with their daily lives. The funds raised will be used for educational materials, audio visual aids to help support engaging group activities, incentives to retain youth in care, and discretionary funds to help family members pay for parking/transportation vouchers.

A big thank you to co-chairs Bebe Browning, Charlie Fraser, Nic Phillips, and Kimball Tyson for raising the most funds Cinco de Bingo has had over the years! And a large applause to Katherine and John Plumb, Lauren Frazier, Allie Pappas, Margaret Pearce, Mollie Schall, Mary Senkel, Laura Sheedy, Winnie Simmons, Anne Kahle, Elizabeth Tyson and Mary Givens Wakefield for their persistence for making things happen because they saw the need!

For more information about SCRUBS or to join the group, please contact the Foundation.



FUNDING FROM SMALL GRANTS HAS LARGER IMPACT.

HARRIS HEALTH'S INNOVATION SUMMIT

The Harris County Hospital District Foundation supported Harris Health's first annual Innovation Summit.

Harris Health innovators met at Bayou City Event Center to recognize the staff who submitted the most creative ideas on how to improve the efficiency and effectiveness of operations throughout Harris Health.

"More than 650 ideas were submitted to the Think Innovation program and savings totaled more than 20 million dollars since the inception of the program," said Shanna Cummings, Director, Practice Plan Improvement.

"We encourage employees to think differently about what we do and how we do it, with every effort geared toward making Harris Health a better place to work and care for our patients," said George Masi, President and CEO.

"This is the year of transformation," he said as he introduced keynote speaker, Jim

McIngvale, also known as "Mattress Mac."

"Mattress Mac is emblematic of change and innovation," said Mr. Masi.

Mr. McIngvale opened his business, Gallery Furniture, 30 years ago, and today is recognized as one of Houston's most successful business entrepreneurs. McIngvale's remarks focused on the concept of "innovate or evaporate," or the need for businesses and organizations to be creative with the services they provide to their customers.

The highlight of the event was celebrating Harris Health's innovations:

SYSTEM INNOVATOR OF THE YEAR PHARMACY CENTRAL FILL

The Facts: Harris Health System pharmacists fills 2.3 million prescriptions each year!

“

THIS IS THE YEAR OF TRANSFORMATION. MATTRESS MAC IS EMBLEMATIC OF CHANGE AND INNOVATION.

”

George Masi,
President and CEO

MORE THAN 650 IDEAS WERE SUBMITTED TO THE THINK INNOVATION PROGRAM AND SAVINGS TOTALED MORE THAN 20 MILLION DOLLARS SINCE THE INCEPTION OF THE PROGRAM.

Shanna Cummings,
Director,
Practice Plan Improvement

The Challenge: By managing the volume of prescriptions being filled, pharmacists are challenged to find adequate time to meet their objective of providing services that bring value to patients. Trained to be part of a collaborative healthcare team, pharmacists are integral to medication therapy management.

The Solution: Central Fill, staffed by 30 pharmacists and pharmacy technicians – and four robots, can fill up to 8,000 non-urgent prescriptions in an eight-hour period. Prescriptions are delivered to one of 16 Harris Health locations.

ADMINISTRATION (HOLLY HALL AND KIRBY) ENDOSCOPY REDESIGN

The Facts: The process of referring patients through the continuum of care was not smooth. Patients were scheduled for visits in several locations; some experienced unnecessary waits. Patient no-shows and cancellations were high.

The Challenge: The Gastroenterology (GI) service provides procedures for patients at Harris Health Ben Taub and Harris Health LBJ. The GI staff was challenged to streamline processes related to patient care and reduce delays.

The Solution: A multi-disciplinary team made significant recommendations: 1) decrease the number of patient visits, 2) standardize criteria, enabling providers within health centers to determine treatment up front, 3) modify the scheduling process, 4) add or ensure appropriate resources. Changes touched virtually every aspect of the patient experience.

AMBULATORY CARE SERVICES DIABETICS AT RISK, A MULTI-DISCIPLINARY PATIENT-CENTERED APPROACH

The Facts: More than 12 percent of the diabetic patients at Vallbona Health Center present with a Hemoglobin A1c level that causes concern. Socio-economic issues, resistance to lifestyle changes, lack of information and expense of healthcare contribute to patients' non-compliance with recommended care.

The Challenge: Diabetes is prevalent among patients at Harris Health's Vallbona Health Center. Proper care involves aggressive management on behalf of the patient and healthcare team. Many patients do not understand the disease and the importance of self-care.



The Solution: Caregivers from several disciplines gather patients in a group setting to address clinical, educational and behavioral issues. Groups meet twice each month for three months. Patients learn about the importance of medication, nutrition, behavioral health, exercise and weight management. During the three-hour sessions, labs and vital signs are checked, and patients can visit with the doctor, pharmacist and behavioral health specialist. The social worker helps with financial eligibility issues and educates about community resources regarding employment, transportation and domestic matters.

BEN TAUB AND QUENTIN MEASE NO ONE DIES ALONE (NODA)

The Facts: Among the patients in Harris Health System hospitals, some come to the end of life with no one at their sides. Some are homeless and some have family members who are far away.

The Challenge: While nurses are dedicated to being at a dying patient's bedside, other patients also require their time. The incidence of patients dying without loved ones nearby is small, but the importance of the occurrence outweighs the number.

The Solution: Similar programs were researched and then No One Dies Alone (NODA) was created for patients who are on comfort care, have DNR status and whose lives are ending. Harris Health employees are trained as Compassionate Companions who volunteer during non-work hours to provide companionship and support

for the dying patient. In two-hour shifts, Companions provide a loving presence during this sacred time.

LYNDON B. JOHNSON DRESSING CHANGE SUPPLIES

The Facts: Clinical Case Management focuses on collaborating efforts that focus on moving individuals to self-care whenever possible and increasing the involvement of the individual in the decision-making process.

The Challenge: Following these principles Dora Sierra, RN Case Manager, found an innovative way to help patients find an affordable resource for dressing and medical supplies from several local community stores that routinely sell all of their items for one dollar. While visiting one of these stores she noticed that they stock similar products for wound care that are given our patients for home care. Since then, the clinical case management has created an inpatient and ambulatory care tool (form 283732 Dressing you can buy at a dollar store—English/Spanish) that case managers use and offer to patients.

The Solution: The cost savings is for the patient and their families. We know that our clients are under extreme financial pressures so to be able to provide some relief, even if it's a few dollars can impact those we serve far more than any internal cost savings. Furthermore, by offering this option helps to ensure that our clients will comply with some of the modalities required for them to heal. Our vision as a system is to "create a healthier community."

“

**WE ENCOURAGE
EMPLOYEES
TO THINK
DIFFERENTLY
ABOUT WHAT
WE DO AND HOW
WE DO IT, WITH
EVERY EFFORT
GEARED TOWARD
MAKING HARRIS
HEALTH A BETTER
PLACE TO WORK
AND CARE FOR
OUR PATIENTS.**

”

George Masi,
President and CEO



HARRIS HEALTH SYSTEM AND THE FOUNDATION WORKED TOGETHER TO RECOGNIZE AND APPLAUD THESE “CHAMPIONS OF INNOVATION.” THEIR WILLINGNESS TO LOOK BEYOND THE STATUS QUO AND IDENTIFY OPPORTUNITIES FOR IMPROVEMENTS IS A NOTICE TO ALL THAT WE MUST EMBRACE INNOVATION AND CHANGE.



CELEBRATING AND SUPPORTING TODAY'S NURSES.

Each year the Foundation hosts a number of fundraisers for specific programs within Harris Health System.

Lester and Sue Smith and the Harris County Hospital District Foundation hosted its first cocktail reception on May 22, 2014 at the lovely home of the Smiths. Proceeds from the event support Harris Health Nurses by advancing their professional, management and leadership skills through education, training, research efforts, and skills development programs.

Representatives from the business community, Harris Health and HCHD Foundation Board members, philanthropists, supporters, and staff attended this successful event.

The cocktail reception provided a valuable networking opportunity for all. The event featured Nurse speakers who highlighted future changes in nursing now being engaged in broader ranges of health care responsibilities.

Today's nurses aren't just caring for the sick; they're changing our very notion of modern medicine and health care delivery. Presentations from some of the honored guest nurse scholar recipients included their experiences caring for sick patients which has become increasingly more complicated.

Nurses are giving talks, publishing scientific research, developing mobile medical applications, and actively engaged in addressing health care policy. Harris Health nurses are collaborating with their colleagues, from social workers and oncologists to hospital administrators and public safety personnel. The advanced practice nursing field is growing, and so are opportunities for nurse practitioners, directors of forensic programs and PhD nurses, nurse educators, nurse-anesthetists, and nurse researchers.

The cocktail reception speakers were very well received by the large audience. On



behalf of the HCHD Foundation Board of Trustees, we appreciate the support of Lester and Sue Smith. We thank them for their support of HCHD Foundation and hosting this successful event. We want to especially thank all the nurses of Harris Health System for their continuous high quality service and pursuit of excellence.

The fundraising is not the first step in change or growth for our nursing staff. The change begins with each nurse deciding more certification or classroom time is what will be important to advance in their careers. Each nurse requests funding from the Nurse Administration. Funds raised each year through this event provide stipends for books, fees and time away from work to attend class. Supporting nurse education also helps advance Harris Health System in its goal to achieve magnet status and to fulfill its mission in part of "training the next generation of healthcare workers."

Upon completion of the certification, degree or training the outcomes are ready to begin!

THE ACCOMPLISHMENTS WERE MANY IN 2014:

Nurse-led Research

- 4 Nurse-led research studies were completed
- 6 Nurse-led research data collections are in process

Nurse-led Scholarly Dissemination

- 13 Nurse-led peer-reviewed publications
- 5 Nurse-led presentations

Nurse Education and Training

- 14 Nurses received tuition reimbursement, books and fees; 10 are RN's
- 5 Nurses graduated through this program

Nurse Training

- 149 Unlicensed Assistive Personnel Support Staff received training
- 95 Nurses received new Nurse Certifications

Nursing Degrees

- 80% of nurses have a BSN or higher degree
- 27% of nurses have professional certifications

We thank all who gave to this fund and are grateful to the funders and the nurses to continued their education.

REPRESENTATIVES FROM THE BUSINESS COMMUNITY, HARRIS HEALTH AND HCHD FOUNDATION BOARD MEMBERS, PHILANTHROPISTS, SUPPORTERS, AND STAFF ATTENDED THIS SUCCESSFUL EVENT.

“

THIS PARTNERSHIP WITH THE CHILDREN'S HEALTH FUND AND HCHD FOUNDATION ALLOWS US TO CONTINUE TO SERVE THOSE IN NEED.

”

Carole Little
CEO, NAM





PARTNERING FOR INNOVATION

“GETTING BETTER TOGETHER.”

The HCHD Foundation has worked together with Harris Health employees and doctors from Baylor College of Medicine and UT Medical School to encourage innovations. Both employees and doctors see every day what can be done differently and we asked them to challenge themselves to find that better way. The Foundation's Small Grants Fund provides seed money for these projects to encourage innovations benefitting patients and staff. And this fund has provided more than \$325,000 in funding towards innovative projects.

IN 2014 SMALL GRANTS PROVIDED:

THE HCHD FOUNDATION'S SMALL GRANTS FUND HAS PROVIDED MORE THAN \$325,000 IN FUNDING TOWARDS INNOVATIVE PROJECTS.

A clothing closet was established for the in-patient mental patients who often come in without enough clothing or shoes.

A Quentin Mease Therapeutic Activity Room was designed to help patients integrate back to the community after their inpatient stay. Many of these patients are emergency center treated trauma survivors.

A pilot Diabetic multidisciplinary Osteomyelitis limb program was established for the diabetic foot.

A mini health fair on opening day of each new clinic. These health fairs offered free vaccines, flu shots, and preventive care information for 5,000 new patients.

Enhanced education skill building activity program for the centering pregnancy learning projects dealing with prenatal care for 120 patients.

120 patients received blood pressure monitors and My Plates

for home use. These help educate patients on managing their blood pressure and food intake in order to help prevent secondary stroke and reduce hospital readmissions.

Governance Institute membership for board education in this changing healthcare environment.

Change management training for Harris Health staff to be able to engage in successful organization change.

Advanced injury scoring course for all trauma nurses.

Certification training and testing to become Certified Quality Auditors for Harris Health.

A film to promote handwashing best practices to all visitors to the nursery areas.

CHILDREN'S HEALTH FUND

The primary role of the HCHD Foundation is to raise funds for the programs and services of the Harris Health System – and there is work on this daily. The HCHD Foundation is also the Steward and Administrator of a permanent endowment called, “The Children’s Health Fund,” benefitting programs in healthcare for the children of Harris County. The HCHD Foundation is charged with managing the investments, and administering the decisions of the Children’s Health Advisory Committee as approved by the Foundation’s Board of Trustees.

The HCHD Foundation began managing these funds in 2002. The focus of these funds has been for programs and services which are for integrated mental and physical healthcare projects for children. In partnership with Harris County, the Harris Health System and the Children’s Health Advisory Committee, the HCHD Foundation annually awards grants from the fund’s investment proceeds. Since 2002, the Children’s Health Fund has granted \$3,531,366 through 88 program grants benefitting the children of Harris County. Of these 42 grants have given to collaborative projects between Harris Health System and its affiliated medical partners – Baylor College of Medicine and UT Medical School, seven grants have been awards to Harris County public programs and 39 grants to non-profit organizations in Harris County.

ALL OF THESE GRANTS WORK IN MANY WAYS TO HELP CHILDREN.

Since 1974, **Child Builders** has provided programs and services that promote positive mental health in children. They focus on preparing, protecting and empowering youth by partnering with greater Houston ISDs, churches, community organizations and other venues. Through HCHDF Children’s Health Fund, ChildBuilders has collaborated with Yellowstone Academy to teach their kids how to protect themselves from victimization, form emotionally healthy relationships, and be nurturing parents in the future. Across the 2013–2014 school year, 418 children in grades Pre–K(3)–8th grade completed at least one program to better their lives.



CHILDREN AT RISK serves as a catalyst for change to improve the quality of life for children through strategic research, public policy analysis, education, collaboration and advocacy. CHILDREN AT RISK focus on four causes: public education, parenting, human trafficking and food insecurity. In 2011, The Center for Parenting and Family Well–Being was established to collaborate with and support organizations that provide direct services to ensure that the infrastructure, policies, and partnerships are in place to improve the availability of evidence–based parent education. From feedback provided it was determined that a different approach would be more effective. After training of staff took place, 34 parents were educated and provided testimonials on how well the new approach helped.



El Centro de Corazón is a community–based Federally Qualified Health Center (FQHC) providing primary care, pediatric, prenatal, mental health, and dental services in the East End area of Houston. Their Children’s Behavioral Health Services Program needed enhancement through the addition of psychological testing and evaluation. Funding helped them to provide access to mental health services for 80 children, which is 20% of the children who struggle with numerous health disparities. To follow through with the services offered to the children, the parents and school leaders are given their evaluation results to better accommodate them.



El Centro de Corazón



Through its many programs and outreach services, **Family Services of Greater Houston** builds stronger families by teaching the life skills necessary to face financial, health, relationship and other critical challenges. Family Services partnered with Collaborative for Children to continue funding for their South Region Children's Mental Health Collaborative so they could promote children's mental health with the ultimate goal of helping children succeed in school and in life. More than 330 children and 134 parents received services that promoted positive development and addressed the trauma of adverse childhood experiences, preventing subsequent cognitive, emotional and physical health issues at Dowling Middle School.



The Harris Health System, in partnership with seven local school districts, offers quality healthcare to children and adolescents in their neighborhoods through a network of school-based clinics. They implemented an integrated approach to address children's mental and behavioral issues through its network that includes a Behavioral Health Clinic. The children were spread out at eight different elementary schools in Galena Park ISD. This consisted of a 10 week session that provided the participants skills and support they need to overcome adversity, stay in school, and stay free of drugs, violence and crime.



Hispanic Health Coalition is a non-profit organization who is committed to advance the overall health of Houston's Hispanic community through education, advocacy, and research. In a partnership with BOUNCE Healthy Lifestyle Programs, they wanted to combine efforts with the PhD in School Psychology Program at the University of Houston to expand integrated healthcare services to low-income Hispanic adolescent females in medically underserved neighborhoods, and especially those who are at risk for obesity. Thirty-three Hispanic families were recruited to complete a summer and fall program that included counseling sessions, motivational interviewing, grocery shopping tours, parent management training, nutrition education, cooking demonstrations, and exercise sessions. In the end there was a significant decrease in pre- and post-perfect body fat and abdominal fat in mothers and their daughters.



Houston Area Community Services (HACS) provides a compassionate medical home for all people of Harris County, regardless of their economic status. With the help of Harris County Hospital District Foundation, they launched the "Mental Health Impact Program" alongside the Covenant House of Texas (CHT) to improve the behavioral health outcomes of homeless and runaway youth in the Houston area. HACS and CHT was able to provide Psychiatric services to 40 youth for a total of 144 encounters, pay for psychotropic medications and provide mental health therapy sessions serving 66 children.



Houston Independent School District and One Voice Texas formed a collaborative partnership with other mental health and student and family services organizations to plan and implement the Lamar High School Behavioral Health Community Collaborative during the last grant cycle. The program targets at-risk students at Lamar High School who need intervention and support. Based on statistics, more than 200 students could potentially have serious mental illness. During the grant year, 545 at-risk students and their families were serviced, 182 of them receiving intensive case management.



Star of Hope is a Christ-centered community dedicated to meeting the needs of homeless men, women and their children. Positive life changes are encouraged through structured programs which focus on spiritual growth, education, employment, life management and recovery from substance abuse. Their program "Project Star Bright" is an onsite early childhood mental health promotion, prevention, assessment and intervention center for homeless children in Houston/Harris County. They were able to prepare the preschool children to successfully enter the public school's kindergarten classes and were able to enhance their social and emotional skills.

INCOME STATEMENT

FOR THE YEAR ENDED 2.28.15



INCOME SUMMARY FOR FISCAL YEAR 2015

Partnership Distributions	\$1,328,666
Contributions	791,523
Investment Income	2,126,317
Support from Harris Health	774,081
Rental Income	234,440
Special Events	168,429
TOTAL	\$5,423,457

Investment Income **39%**
Support from HCHD **14%**

Partnership Distributions **24%**
Rental Income **4%**

Contributions **15%**
Special Events **3%**

EXPENSE SUMMARY FOR FISCAL YEAR 2015

Programs and Grants Distributed	\$2,881,146
Management and General Expenses	359,712
Fundraising Expenses	394,989
TOTAL	\$3,635,847



Programs and Grants Distributed **79%**

Management and General Expenses **10%**

Fundraising Expenses **11%**

STATEMENT OF ACTIVITIES FOR THE YEARS ENDED 2.28.14 AND 2.28.15

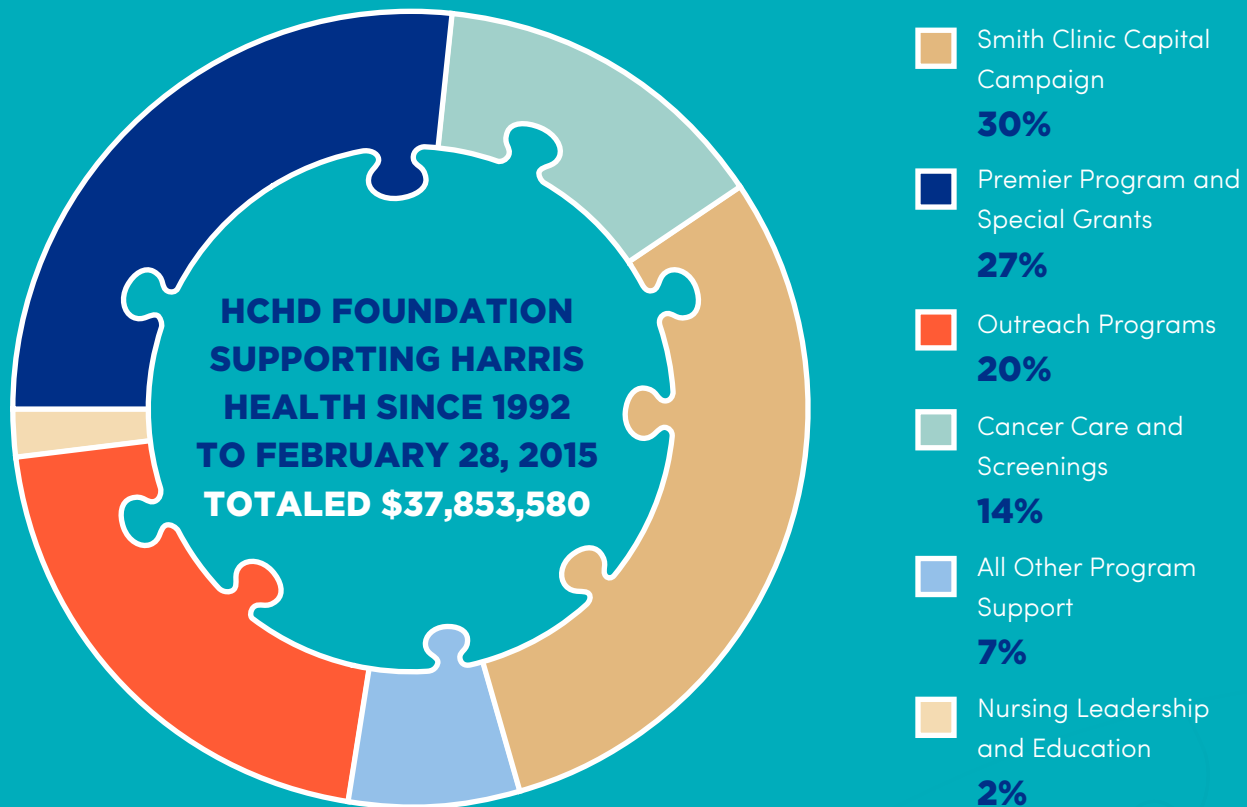
	2015	2014
REVENUE		
Contributions	\$791,523	\$998,235
Special Event Revenue, Net	168,429	261,217
PROGRAM REVENUE	959,952	1,259,452
Support from Harris Health System	774,081	780,803
Rental Income	234,440	251,860
Investment Return, Net	2,126,317	2,194,430
Alternative Investment Income	1,328,666	3,850,224
OTHER REVENUE	4,463,505	7,077,317
TOTAL REVENUE	\$5,423,457	\$8,336,769
EXPENSES		
Harris Health System Projects & Programs	\$2,881,146	\$3,437,342
Management and General	359,712	368,499
Fundraising	394,989	273,989
TOTAL EXPENSES	\$3,635,847	\$4,079,830
CHANGE IN NET ASSETS	1,787,610	4,256,939
NET ASSETS, BEGINNING OF YEAR	34,494,769	30,237,830
NET ASSETS, END OF YEAR	\$36,282,379	\$34,494,769

STATEMENT OF FINANCIAL POSITION FOR THE YEARS ENDED 2.28.14 AND 2.28.15

	2015	2014
ASSETS		
Cash and Cash Equivalents	\$777,652	\$999,565
Accounts Receivable and Prepaid Expenses	21,694	22,732
Pledges Receivable	11,971,052	12,441,054
Investments	23,104,046	20,820,674
Investment in Partnership	614,735	614,735
TOTAL REVENUE	\$36,489,179	\$34,898,760
LIABILITIES AND NET ASSETS		
Accounts Payable and Accrued Expenses	\$206,800	\$403,991
Deferred Revenue		
TOTAL LIABILITIES	206,800	403,991
Unrestricted	9,001,034	7,594,947
Temporarily Restricted	26,741,473	26,408,872
Permanently Restricted	539,872	490,950
TOTAL NET ASSETS	36,282,379	34,494,769
TOTAL LIABILITIES AND NET ASSETS	\$36,489,179	\$34,898,760

PROGRAMS AND GRANTS EXPENDITURES

1992-FEBRUARY 28, 2015



SUMMARY FOR 1992 THROUGH FEBRUARY 2015

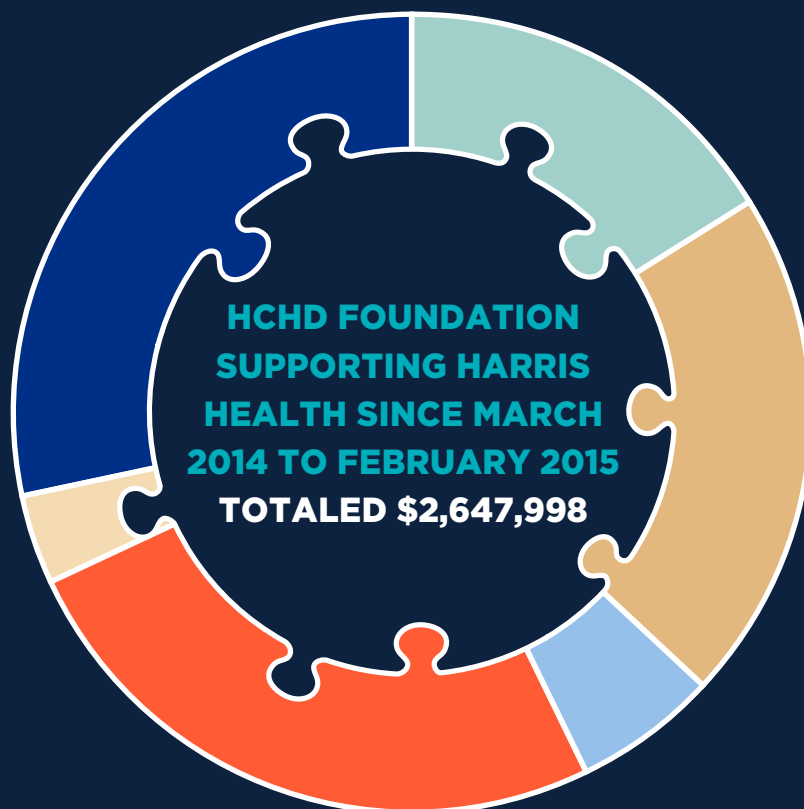
Cancer Care and Screenings	\$5,245,450
Smith Clinic Capital Campaign	11,334,881
All Other Program Support	2,703,050
Outreach Programs	7,755,099
Nursing Leadership and Education	664,091
Premier Program and Special Grants	10,151,009
TOTAL	\$37,853,580

Over the past 23 years, the HCHD Foundation has been able to contribute \$37 million to various programs and initiatives of the Harris Health System. The Harris County Hospital District Foundation would like to thank each and every volunteer, donor, community partner, and supporting organization that generously donated both time and funding to support our mission.

PROGRAMS AND GRANTS EXPENDITURES

MARCH 2014–FEBRUARY 2015

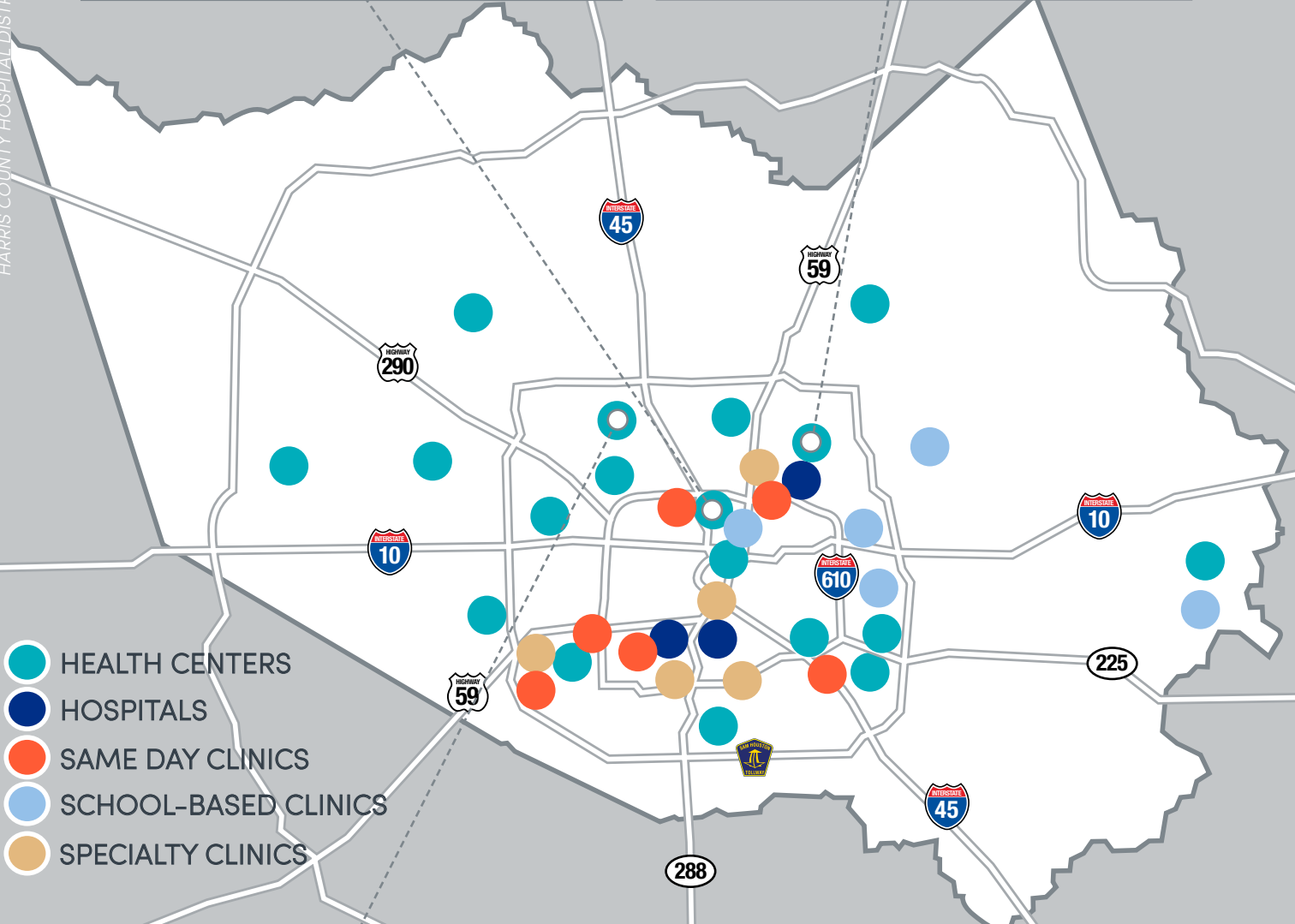
- Premier Program and Special Grants
28%
- Outreach Programs
25%
- Smith Clinic Capital Campaign
21%
- Cancer Care and Screenings
16%
- All Other Program Support
6%
- Nursing Leadership and Education
4%



SUMMARY FOR MARCH 2014 THROUGH FEBRUARY 2015

Cancer Care and Screenings	\$432,090
Smith Clinic Capital Campaign	547,635
All Other Program Support	155,324
Outreach Programs	671,845
Nursing Leadership and Education	96,796
Premier Program and Special Grants	744,308
TOTAL	\$2,647,998

Each dollar and each man-hour helps us to work toward that mission – to positively impact the lives of those served by the Harris Health System. With your continued support, community health outreach programs, patient education and professional development of health care providers within the Harris Health System will continue to serve as the Foundation's focus in the years to come.



TO OUR STAKEHOLDERS AND FRIENDS:

THE MISSION OF THE HARRIS COUNTY HOSPITAL DISTRICT FOUNDATION IS TO ENHANCE THE BROAD HEALTHCARE MISSION OF THE HARRIS HEALTH SYSTEM BY SOLICITING AND RAISING FUNDS FOR PROGRAMS, AND INCREASING THE COMMUNITY'S AWARENESS OF THE HARRIS HEALTH SYSTEM.

Harris Health System estimates there are one million persons in the county under insured or uninsured. Of those, Harris Health saw approximately 360,000 patients in 2 million visits last fiscal year. Sixty-four percent of the patients are charity care, another twenty one percent are Medicaid patients with a final fifteen percent third party payers/insured.

There are few nonprofit and no for-profit institutions where the majority of the customers are charity-care based and are still in business year after year – yet that is the charge of Harris Health System. With its three hospitals and 20 plus clinics and mobile units, each day 8,000 employees are working to help our neighbors become healthy and in turn create a healthier community.

The Harris County Hospital District Foundation will continue to reflect and act on the needs of the population served as identified by Harris Health. We ask for your support as engaged stakeholders and goodwill ambassadors over the next years as we continue this support of Harris Health and its programs. It is only with your help that we can succeed.

SINCERELY, RUTH RANSOM, EXECUTIVE DIRECTOR

THANK YOU FOR YOUR DONATIONS

\$100,000 - \$999,999

Houston Affiliate of Susan G. Komen
for the Cure

\$25,000 - \$99,999

DentaQuest Foundation
Epic Systems
Health Care Services Corporation
Heritage Title Company of Austin, Inc.
Pink Ribbons Project, Inc.
Taub Foundation
The Brown Foundation, Inc.
The Cullen Trust for Health Care
The Lester and Sue Smith Foundation
The Simmons Foundation

\$10,000 - \$24,999

Boeing Global Corporate Citizenship
Community Health Choice
Houston Livestock Show and Rodeo
Mr. Gary Mercer
Ms. Alisa E. O'Leary

\$5,000 - \$9,999

Ms. Cheryl A. Gibson
Mr. and Mrs. Harry Mach
University of St. Thomas

\$2,500 - \$4,999

Bayshore Medical Center
Mr. and Mrs. Joseph Bollinger
Christus Health Spohn
Cigna
Mr. and Mrs. Robert H. Dale, III
Designer Fragrances and Cosmetics
Mrs. Clare Attwell Glassell
Mr. and Mrs. Ben Guill

Mr. and Mrs. Gerald Hines
IBEW Local Union #716
Memorial Hermann Health System
Sanita Footwear, LLC
Mr. Robert W. Stone
Texas Medical Association -
UT Houston Student Chapter
The Attwell Foundation
Vivian L. Smith Foundation
Zucchetto Enterprises LLC

\$1,000 - \$2,499

Abbott Point of Care
Mr. and Mrs. Daniel C. Arnold
Baker's Safe & Lock, Inc.
Books Are Fun, LTD.
Mr. William Browning
Chambers County Public Hospital
District #1
Mr. and Mrs. James Y. Chao
Mr. and Mrs. John Clutterbuck
Mr. and Mrs. Gary L. Crum
Dr. Carmel B. Dyer and Mr. James Dyer
Mr. and Mrs. Donald F. Faust
Mr. and Mrs. James C. Flores
Dr. and Mrs. Charles D. Fraser, Jr.
Greater Houston Healthconnect, Inc
Mr. Christopher Green
Halco Life Safety Systems
Hines Interests Limited Partnership
Huntsville Memorial Hospital
Mr. and Mrs. Ken Janda
LifeGift
Mrs. Claudia Luciana-Thomas and
Dr. Milton M. Thomas
Luck Family Foundation
Mr. and Mrs. George V. Masi
Mr. and Mrs. Richard Mithoff
Nacogdoches Memorial Hospital
O&P Healthcare
Mr. and Mrs. Christopher O. Okezie

Patti Hunter Moody Family Trust
Performance Logic Inc.
Preferred Technologies, Inc.
Mr. and Mrs. John Ransom
Ms. Ashley Rhodes
Ms. Regina J. Rogers
Scott & White
Seton Medical Center Hayes
Smart Circle International LLC
St. Mark's Medical Center
Target Corporation
Texas Health Arlington Memorial
Hospital
The Sheedy Foundation
Dr. Poldi Tschirch
University Of Texas Medical
Branch Health
Wortham Insurance & Risk Management
Mr. and Mrs. Mark Wozny

\$500 - \$999

Mr. and Mrs. David R. Almaguer
Angleton Danbury Medical Center
Mr. Jaime R. Arevalo
Mrs. Mary P. Attwell
BARD
Mrs. Reva Basho
Baylor Scott & White Hilcrest
Medical Center
Bowie Memorial Hospital
Brazosport
Central Texas Medical Center
Clear Lake Regional Medical Center
Ms. Elizabeth Cloyd
Dimmit Regional Hospital
Doctors Hospital at Renaissance
Ms. Barbara E. Doolin
East Texas Medical Center Athens
Ms. Connie Gaskamp
Gina's Accessories
Ms. Tiffany Harris

Every attempt has been made to assure accuracy in donor recognition; however, in compiling such lists omissions and mistakes may occur. Please advise the Development Office (713.566.6409) of any errors. We appreciate the opportunity to correct our records.

Harris County Medical Society
 Dr. Tom Hartley, DNP, RN and
 Ms. Rebecca Chanin, RN
 Ms. Manolita B. Henson
 Mr. Ray W. Higgins
 Mr. King Hillier
 Hill-Rom
 Mr. and Mrs. Jay R. Houren
 Mr. Kevin Hudson
 Jackson County Hospital District
 Ms. Gail Jordan
 Jourdanton Hospital Corporation
 Mr. and Mrs. Kent Kahle
 Ladies Charity Club
 Mainland Medical Center
 Masquerade Jewelry Fundraising
 Ms. Charlizza L. McMurray-Horton and
 Mr. Steve Horton
 Medina Regional Hospital
 Network of Behavioral Health Providers
 Pampa Regional Medical Center
 Ms. Amy Pounders
 Preferred Hospital Leasing
 Coleman, Inc.
 Renet
 Dr. Alyssa G. and Mr. Daniel Rieber
 Ms. Karen Riordan
 The Wilhelmina E. Robertson Fund
 Ms. Nancy Rogers
 Ms. Pamela R. Russell
 South Texas Health System
 Stephens Memorial Hospital
 Tenet Healthcare Corp.

Mrs. Carolyn Truesdell and
 Mr. J. Richard Cheney
 Dr. and Mrs. Jessie L. Tucker, III
 Uvalde Memorial Hospital
 Mr. Paul David Van Atta
 Melvyn and Cyvia Wolff Charitable Fund

\$250 - \$499

Mr. and Mrs. John A. Adkins
 Mrs. Joy Akhigbe
 Ms. Barbara Alford
 Mr. Denny L. Anderson
 Mr. David Attard
 Mr. and Mrs. Eric Bing
 Ms. Janie Borrego
 Ms. Ardis J. Bush
 Susan M. Cooley, Ph.D.
 CORE Chiropractic
 Mrs. Lisa Cravens
 Mr. and Mrs. Douglas Creamer
 Mr. and Mrs. Greg Curran
 Ms. Loretha M. Darden
 Ms. Sammie L. Dawson
 Ms. Denise De La Garza
 Ms. Desolyn J. Foy
 Mr. and Mrs. Elvin Franklin, Jr.
 Mr. Jon D. Hallaway
 Mrs. Loretta Hanser and
 Mr. James Roberson
 Ms. Jocelyn K. Harden
 Ms. Marguerite Hiller
 Jackson's Bar Inc.

Mr. and Mrs. Michael D. Johnson
 Mr. Michael A. Johnson
 Mr. and Mrs. Anthony R. Kinchen
 Ms. Janet Lamb
 Mr. and Mrs. Truett Latimer
 Mr. and Mrs. R.T. Leonard
 Mr. Luther Leonard, III
 Dr. Lori Leslie
 Mr. and Mrs. David S. Lopez
 Ms. Ellen Martin
 Ms. Nancy S. Mathis
 Mrs. Donna K. McKee
 Nutrition Options
 Mrs. Maureen S. Padilla
 Mr. and Mrs. Harry M. Reasoner
 Mr. and Mrs. Raymond Reece
 Dr. Maria C. Reyes
 Ms. Lastenia Roeback
 Ruth Bauer 2001 Management Trust
 Mr. and Mrs. Andrew L. Sanchez
 Mr. and Mrs. Glen Smith
 Mr. and Mrs. Mike G. Staley
 Dr. Richard Strax
 The Estates at Stone Crossing Ltd
 Total
 Ms. Ann G. Trammell
 Ms. Alexandra Tyson
 Ms. Pauline Vickers
 Mr. and Mrs. Norman Weisbrodt
 The Honorable and Mrs. Bill White
 Ms. Regina Williams
 Ms. Stacie L. Yarbrough
 Mr. and Mrs. Daniel Zachariah

\$249 AND UNDER

Ms. Margaret Aalund	Ms. Lynn Adami	Ms. Mahnoor Ahmad	Mr. and Mrs. Jeffrey	Miss Ruth D. Allen
Ms. Aiman Aazid	Mr. Graham Adams	Ms. Francis Ajero	Alesna	Ms. Eliana Alozno
Ms. Lynn Abell	Ms. Christina Adams	Ms. Rosemary Akachukwu	Ms. Hattie Alexander	Ms. Coreena Altamirano
Ms. Maria V. Abella	Mrs. Mary Ann Agtual	Ms. Katarzyna Aksamit	Ms. Sherry Alexander	Ms. Victoria O. Alvarado
Mr. Sitotaw Abera	Ms. Adriana Agudelo	Mr. Karthik Alagugurusamy	Ms. Jennifer Alexander	Ms. Daniela Alvarez
Mr. Jerin Abraham	Mr. Victor Aguirre	Mr. Raj Alagugurusamy	Ms. Dorothy Alford	Mrs. Luz Alzate
Ms. Rosa Acosta	Mr. Syed Zubair Ahmad	Ms. Adriana Alcalá	Mr. Nicholas Allen	Ms. Esther N. Amaechi

Every attempt has been made to assure accuracy in donor recognition; however, in compiling such lists omissions and mistakes may occur. Please advise the Development Office (713.566.6409) of any errors. We appreciate the opportunity to correct our records.

THANK YOU FOR YOUR DONATIONS

Ms. Maria Amaro
AmazonSmile
Ms. Terra Amberson
Ms. Carolyn Amos
Ms. Janie M. Anders
Mr. Nick Anderson
Ms. Mary Anderson
Ms. Genitra Andrews
Mrs. Helen Nkeiru Aneke
Mr. Waseem Ansari
Ms. Lakisha
 Anthony-Smith
Mr. John Antonio
Ms. Meredith Aote
Apache Corporation
Mr. Andrew Appleton
Dr. Angela Appling
Mrs. Reichelle Araula
Mr. Thomas Archer
Ms. Kelly A. Armstrong
Mrs. Maggie Arnold
Mr. and Mrs. William
 Arnold
Miss Kaitlin Arnold
RT Arnold
Ms. Lydia L. Arribe
Mr. Ronald Arrington
Ms. Monica S. Arroyo
Ms. Lorena Arroyos
Mr. Ryan Arula
Mr. Jason Arvanites
Ms. Monica Ashley
Mrs. Rowena Atadero
Ms. Kaitlin Atnip
Mr. Adarsh Atur
Ms. Archana Atur
Ms. Dorothy Ayala
Ms. Leticia I. Ayala
Ms. Jarri Ayers
Ms. Karen Babb
Mr. and Mrs. Bhavana
 Babber
Ms. Roshini Babu
Rony Babu
Mr. Greggry Gringo
 Baculo
Ms. Anita Baines
Mr. Prince Balason
Mrs. Tamira Balay
Mr. Frank Baldwin
Ms. Debbie F. Bandeaux
Ms. Claire Banham
Mr. Woube Banjaw

Mr. Eric Bank
Ms. Shelley Barger
Ms. Sharon Barker
Mrs. Deven Barriault
Ms. Kennedy Barrientos
Mr. Charlie Bartley
Mr. Roderick S. Batson
Mr. Brett Baucum
Mrs. Loida Bautista
Ms. Dorothy Bautista
Mr. Siddhartha Baweja
Ms. Mary Bearden
Mr. Greg Bell
Mr. Jeffery K. Benavides
Ms. Rebecca Bender
Mr. Talis Bennett-
 Verschure
Ms. Marilou N. Bentiroso
Mr. Ward Berger
Mr. Brian Bergeron
Mr. James C. Berkley
Mr. Bob Berlin
Ms. Virginia Bernardino
Ms. LaRonnda Berry
Mr. Paul Bertin
Ms. Melinda Bertrand
Mr. Luuk Besselink
Senny Betancourt
Mr. Hank Biddle
Mr. Kahler Biedenbarn
Ms. Brandy Bielik
Ms. Ashley Bird
Mrs. Irina Birisheva
Miss Catherine Bissell
Ms. Courtney Blackburn
Mrs. Brittany Blackston
Miss Jaime Blair
Mr. Don Blake
Ms. Saiyeda Blanco
Mr. and Mrs. Jack S.
 Blanton, Jr.
Ms. Sandra Blanton
Mr. Chris Blaschke
Ms. Claudette M. Blaylock
Ms. Brittany Bledsoe
Ms. Heather Bloomfield
Ms. Sarah Bodine
Ms. Peggy Boice
Mr. Quincy L. Bonner
Ms. Kerry Booker
Ms. Susanne Boone
Ms. Mara Bosch
Ms. Hazel Bourne

Mr. and Mrs. Murry
 Bowden
Ms. Caitlin Bowden
Mrs. Terri Bowden
Mr. Blake Bowerman
Ms. Trinetia Boyd
Ms. Laynie Bracewell
Ms. Leslie A. Bradley
Ms. Blair Brame
Ms. Vicky G. Branch
Mr. Peter Bray
Miss. Hattie Brazelton
Mr. Andrew Broadfoot
Ms. Lauren A. Broadley
Mr. Jason Brock
Ms. Sarah Brock
Ms. Latrecia S. Brodie
Mrs. Nora Brooks
Mr. Randall Brooks
Mr. James Brooks
Ms. Miriam F. Brown
Miss Mary Bell Browning
Ms. Michelle Brull
Mr. Tim Brumm
Ms. Scherra Bryant-Jones
Mr. Gregory Brzostek
Ms. Kendall Buckalew
Ms. Tyfanie Bui
Mr. Lowell Bulawan
Ms. Anita Burgess
Ms. Caroline Burke
Ms. Mary-Kate Burkert
Ms. Katherine Burn
Mr. Lloyd Burnett
Ms. Becca Burnitt
Ms. Lisa N. Burrell
Ms. Andrea M. Bush
Ms. Deborah Bynum
Ms. Leticia Cadengo
Ms. Leanna Cains
Mr. Nicholas Caldera
Mr. Jose Calderon
Ms. Yanice Calderon
Mrs. Marcia Callarman
Ms. Amanda M. Callaway
Ms. Bianca Calo
Ms. Larilyn Calvit
Ms. Criselda Campa
Dr. Matthew Campbell
Ms. Cynthia Campbell
Ms. Jennifer Campbell
Ms. Carrington
 Campbell-Jones

Ms. Lucy Campirano
Ms. Katherine Cane
Ms. Bobbi Cano
Ms. Nora Fe Canson
Mr. Alejandro Capetillo
Mr. Darrin Caramonta
Mr. Loyd Carey
Mr. Robert A. Carpenter
Ms. Molly Carpenter
Mr. Nick Carreon
Ms. Molly Carter
Ms. Markeita Carter
Mr. Dean J. Casburn
Ms. Ashley M. Cassel
Ms. Leah Castaneda
Ms. Anna Cathey
Mr. Sharon R. Cavitt
Mrs. Thelma Cerwin
Mr. Michael S. Chadwick
and Dr. Marjorie M.
 Chadwick
Ms. Anna Laura Chae
Ms. Virginia Chamberlain
Mr. Chien Ming Chang
Mr. Gary Chang
Mr. Robert Chapa
Mrs. Ariana Chapman
Ms. Brittany Charles
Ms. Elizabeth Charpiot
Ms. Brittany Chatman
Mr. Lee Chavez
Ms. Belem Chavez
Ms. Angel C. Chenier
Ms. Sabrina K. Cheshire
Ms. Lizzy Chesnut
Ms. Allyson Chiang
Ms. Lulu Chiyenge
Ms. Brooklyn Chlamon
Mr. Neel Choksi
Ms. Adrienne Choksi
Ms. Emma Christoherson
Ms. Christy Chukwu
Mr. Jonathan Cimo
Ms. Leslie Cislo
Ms. Florine Citizen
Ms. Nazetta R. Clark
Mrs. Karen Clark
Ms. Dana Clark
Ms. Tameka Clark
Ms. Benetia Cline
Mrs. Pamela J. Cobb
Ms. Erika Cockrell
Miss Faith Collaso

Chris Collier
Ms. Megan Combe
Mr. Adam Condron
Miss Caroline Conway
Mr. Joe Conway
Mrs. Macey Cooksey
Ms. Emily Corl
Mr. Christopher Corl
Mr. Maria Cornejo
Mr. Timothy Cornett
Mr. Gustavo Coronado
Mrs. Wilma Corpuz
Ms. Blanca Cortes
Mr. Hector Cortez
Mr. Christopher Costello
Mr. John Costo
Dr. Heather Cowardin
Ms. Maria Cowles
Mrs. Krystal Crane
 Thompson
Mr. Thomas Crigler
Ms. Rebecca Crocker
Mr. Walter Crofton
Mr. and Mrs. O.
 Holcombe Crosswell
Ms. Sue Crozier
Ms. Ashley Cruz
Mrs. Fe Cruz
Ms. Pamela Cruz
Mr. Angel Cruz
Mr. Eric Cruz
Mr. Juan Cruz
Ms. Arlene Cruz
Ms. Carina Cruz
Ms. Rosalinda Cruz
Ms. Donia Cruz-Lopez
Mr. Jaime Cryer
Mr. Meredith Cullen
Mr. Ryan Cummings
Ms. Cecelia Currier
Mr. Eugene Curtiss
Mr. Peter Cutbill
Ms. Vanessa Cutbill
Mr. Nasser Dabbas
Miss Nicole M. Dallas
Ms. Anayatzin Damian
Mr. Raphael DAmico
Mr. Carl Dammel
Ms. Jamie Dammel
Ms. Celeste Dammel
Mr. and Mrs. James D.
 Dannenbaum
Ms. Algenita Davis

Every attempt has been made to assure accuracy in donor recognition; however, in compiling such lists omissions and mistakes may occur. Please advise the Development Office (713.566.6409) of any errors. We appreciate the opportunity to correct our records.

Ms. Donna Davis	Ms. Angela Dunlap	Ms. Joan W. Felix	Ms. Chistina Gallegos	Ms. Evelyn Green
Mrs. Kimberly Davis	Ms. Jessica Dunlap	Ms. Angeline Fernandez	Ms. Maria Garcia	Ms. Cynthia Greene
Mrs. Felecia Davis	Ms. Karin Dunn	Ferndale Laboratories, Inc	Mr. and Mrs. Roland Garcia, Jr.	Ms. Elizabeth Gregory
Mrs. Nika Davis	Ms. Amber Dunn	Ms. Noor Ferrell	Mr. Jairo Garcia	Mr. Anthony Gregory
Mr. Sam Davis	Mrs. Beatriz Duran	Mrs. Allie Fields	Ms. Sylvia Garcia	Ms. Allison Griest
Ms. Diane Davis	Ms. Bryttie Duren	Mr. José Figueroa	Ms. Margarita Gardea	Ms. Cynthia Grigalonis
Ms. Erika Dawkins	Mr. Tommy Duvall	Ms. Stephanie Fine	Mr. Darnell Gardner	Miss Brooke Grisebaum
Ms. Cindy De Groot	Mr. Shawn Dyson	Mr. Jimmie Finister	Ms. Sonia Garner	Ms. Ellin Grossman
Ms. Aurora De La Garza	Ms. Veronica Dyson	Mr. Carlos Finley	Mrs. Kim Garrett	Ms. Kate Grover
Mrs. Patricia De Los Rios	Mr. Kevin Dyson	Dr. Michael Fisch	Ms. Patricia E. Garvin	Ms. Alba Guadalupe
Ms. Rachelle De Los Santos	Mr. Santiago Dyson	Mr. Brandon Fisher	Miss Krystal Garza	Mrs. Jennifer Guerrero
Mr. Jose de Souza	Mrs. Sydney Ealand	Mr. Siler Fisher	Mr. William Gaw	Ms. Anita Guerrero
Ms. Nathalie de vos Burchart	Mr. Abraham Eapen	Ms. Angela Fisher	Ms. Jill Gay	Mr. Riccardo Guerrieri
Mr. Denis A. DeBakey and Ms. Lavonne Cox	Mrs. Leena Eapen	Ms. Debbie Fisher	Ms. Jodie Gee	Ms. Peggy Guitar
Ms. Ashley DeCorte	Mr. Bradley Eaves	Ms. Drew Fisher	Ms. Lauren Geiger	Ms. Wendi Guo
Ms. Ashley Dees	Ms. Minouz Eberhard	Ms. Harmon Fisher	Ms. Gretchen Gemeinhardt	Ms. Sylvia Gutierrez
Ms. Amy DeHaven	Ms. Valerie A. Edwards	Ms. Indiana Fisher	Ms. Ashley Gendrett	Ms. Amanda Gutierrez
Ms. Kelsey DeLave	Mr. and Mrs. James Edwards	Mr. Asa Fitzsimons	Mr. Christopher Gengo	Ms. Sandra Gutierrez
Ms. Lorena Delcid	Ms. Nikada Eglund	Ms. Laura Fleming	Mr. Tyler Gengo	Mr. Elsa Gutierrez
Mr. Derek Delgado	Ms. Monarissa Ehlers	Mr. Davis Flowers	Mr. Shiju George	Ms. Felicia Hadnott
Ms. Alicia Delgado	Mr. Matthew Eichelberger	Ms. Olivia Flowers	Mrs. Eliamma George	Mrs. Aurora Hafner
Mr. Herman Delgado	Ms. Lisa Eichelberger	Ms. Amanda Flynn	Ms. Betty Gerech	Ms. Rebecca Hall
Dell Computers	Ms. Mary Eilers	Ms. Muriel S. Folloder	Mr. Rocky Geryk	Dr. Daniel Halperin
Ms. Mary Ann Delossantos	Ms. Deborah Ekblaw	Ms. Wendy M. Fontaine	Ms. Patti Geryk	Mr. Hiroshi Hamada
Ms. Lauren Deluca	Miss Frances Elliott	Mr. Steven Fontenot	Mr. Michael Giambra	Dr. and Mrs. Carlos R. Hamilton, Jr.
Mr. Akshay Desai	Mr. Kelley Elliott	Mr. and Mrs. Steven Fontenot	Ms. Denise Giammona	Mr. William Hamlyn
Mr. Daniel Desmond	Mr. Andrew Emerald	Ms. Sarah Ford	Ms. Killian Gilbert-Smith	Mr. Fredrick N. Hancock
Ms. Dusty Devereaux	The Honorable and Mrs. Ed Emmett	Ms. Carolyn K. Foreman	Ms. Lillian Gilbert-Smith	Mr. and Mrs. Barry Hanke
Ms. Maria Lucia Diaz	Ms. Marla Eovaldi	Ms. Michelle Foreman	Ms. Jan Gilden	Ms. Christine Hanner
Ms. Zorlina Diaz	Mr. Kenton Erickson	Ms. Fran Forget	Mr. Thomas Giordano	Ms. Catherine Harbove
Mr. Daniel DiDonato	Mr. and Mrs. Everlino V. Ermitanio	Ms. Danielle Forget Shield	Mr. Larry Glenn	Ms. Sarita Harris
Ms. Nancy Dillow	Miss Amanda Esmond	Ms. Judy Forisha	Mr. Alvin Glenn	Ms. Obea Harris
Mr. Taylor Dio	Mrs. Edsel Estabillo	Mrs. Sherri Forschler	Ms. Cleofe Glover	Ms. Sally Harris
Mrs. Van H. Do	Mr. Burgess L. Etzel	Mrs. Beverley Foster	Ms. Hannah Goffe	Ms. Caren Harris
Mr. Michael Doerflein	Mr. and Mrs. Burgess Etzel	Mr. Christopher Foster	Dr. Jennifer Goldstein	Harris and Eliza Kempner Fund
Mr. Javier Donaghy	Mrs. Amy R. Evans	Ms. Maria Franco	Mrs. Carla Golemon	Ms. Marsha Hart
Ms. Pam Donaldson	Ms. Sheri R. Everett	Mr. and Mrs. Bryan G. Frazier	Ms. Susan V. Gonzalez	Mr. Thomas Hart
Ms. Hans Donon	Ms. Anne Evers	Mr. Sam Freedman	Ms. Claudia Gonzalez	Ms. Barbara Haverstock
Ms. Ellen Doramus	Ms. Ashley Evers	Mr. Frank Freeman	Mr. Rodolfo Gonzalez	Ms. Glenda D. Haynie
Ms. Jeanette Dorman	Ms. Eleina Faber	Mr. Jason Freeman	Ms. Ninive Gonzalez	Ms. Joie Heldstab
Ms. McKenzie Doss	Mr. Johnathan Fahrner	Mr. Marc Freeman	Mrs. Kathy M. Goodwin	Mr. and Mrs. Michael F. Henderek
Mr. Richard Dower	Ms. Valory Falke	Ms. Miranda Freitag	Mr. Wesley Goree	Dr. Andrea C. Henry
Ms. Mina Dowlatshahi	Mr. Timothy Fan	Mr. Lloyd French	Ms. Connie Gray	Ms. Jennifer Henry
Mr. John Draha	Ms. Gratia Fan	Mrs. Mary Frost	Mr. Elliott Gray	Mr. Stephen Henry
Miss Melissa Dreger	Ms. Shirin Farahani	Ms. Erika A. Fuentes	Mr. Marie Gray	Mr. Zachary Hensley
Mr. Freddie Duarte Veloso	Ms. Caroline Farish	Ms. Ericka Gaddis	Ms. Jacey Gray	Ms. Lynn Adele Hernandez
Mr. James Dugar	Mr. Reyes Fcna-mh	Mr. Thomas Gagnon	Mr. Marc Graye	Ms. Denisse Hernandez
Ms. Alyssa Dugar	Mr. Greg Feigh	Ms. Michelle M. Galindo and Mr. Jack Talton	Ms. Susan Graye	Mrs. Celina Hernandez
Ms. Sarah Dunford			Ms. Lisa Green	
			Ms. Sharel Green	

Every attempt has been made to assure accuracy in donor recognition; however, in compiling such lists omissions and mistakes may occur. Please advise the Development Office (713.566.6409) of any errors. We appreciate the opportunity to correct our records.

THANK YOU FOR YOUR DONATIONS

Mr. Andrew Hernandez
 Ms. Deborah Herndon
 Mr. and Mrs. Ruben A. Herrera
 Mr. Victor Herrera
 Mr. Don Hickle
 Mrs. Jordan Hicks
 Ms. LaCarla Hicks
 Ms. Shannon Hightower
 Miss Blair Hix
 Mr. Trung Ho
 Ms. Tu Ho
 Mrs. Janet Hoagland-Sorensen
 Ms. Myly Hoang
 Ms. Daisy Hoang
 Ms. Terry Hobbs
 Ms. Grace Hobby
 Ms. Jennifer Hobson
 Dr. Robert Hoekman
 Dr. Marc Hoffmann
 Mr. Jacob Hofstetter
 Miss Chelsea Olivia Holland
 Mrs. Melody Holliday
 Ms. Walonda Hollins
 Mrs. Andrea Holmes
 Ms. Janet Hongland
 Ms. Freweini Hood
 Ms. Brittany Horine
 Mr. Yuri Horner
 Mr. Matthew Horstman
 Mr. William M. House
 Ms. Jennifer G. Houston
 Houston Independent School District
 Ms. Melanie Howard
 Mr. Steven Howard
 Ms. Patricia Howard
 Ms. Cara Howe
 Mr. Jacob Hoyt
 Ms. Bei Hu
 Mr. Henry Huang
 Mr. Yuan Yu Huang
 Ms. Elisa Hudek
 Mrs. Amanda Hughes
 Ms. Rachel Huk
 Mr. Kevin Hunt
 Ms. Melissa Hurta-Crites
 Icon Hospital, LLP
 Ms. Chizoba Ifeorah
 Ms. Valerie Imperial
 Ms. Caroline Incavo

Mr. James Irvine
 Mr. Ghayas Issa
 J.P. Morgan Chase
 Ms. Tamera L. Jackson
 Mr. Taije Jackson
 Mr. and Mrs. Thomas C. Jackson
 Mrs. Chara Jackson-Simon
 Mrs. Arenda R. Jacobs
 Dr. Ryan Jacobs
 Ms. Jennifer Jacobs
 Ms. Donna Jameson
 Ms. Hailey Janecka
 Ms. Nicole Janecka
 Mr. Filip Janku
 Ms. Alison Jannise
 Mr. David Jarkey
 Mr. Hayden Jefferies
 Ms. Jacquelyn Jefferson
 Ms. Cynthia Jenkins
 Mr. Allan Jenman
 Mrs. Lee Jerls
 Jerry & Nanette Finger Foundation
 Ms. Karen Jiles
 Ms. Margarita Jimenez Glenn
 Ms. Madeline Johnson
 Ms. Shelia M. Johnson
 Mr. and Mrs. Richard Johnson
 Ms. D'ondrea Johnson
 Ms. Helen C. Johnson
 Ms. Abby Johnson
 Ms. Rosa L. Johson
 Mr. Cedric Jolivet
 Mr. Melvin K. Jones
 Ms. Ulrike Jones
 Ms. Alberta Jones
 Ms. Kelly Jones
 Mr. Anu Joseph
 Ms. Tiby Joseph
 Ms. Jazmyne Joseph
 Ms. Jennifer Josey
 Ms. Linda S. Josselyn
 JP Morgan Chase Foundation
 Mr. Danny Juarez
 Mr. Jose Juarez
 Ms. Beverly A. Julien
 Mr. Mohammad Kadamany
 Ms. Alice Kaon

Dr. Asha Seth Kapadia
 Mr. Afshan Kazim
 Dr. Ken Kehl
 Mrs. Eileen Kelley
 Ms. Sara Kelly
 Ms. Madeline Kelly
 Ms. Jordan Kerensky
 Ms. Mary Jane Kerr
 Miss Alison Ketabchi
 Ms. Misrak Ketema-Habte
 Ms. Stephanie Kilty
 Ms. Amy Kimes
 Mrs. Anne L. Kinder
 Kindred Healthcare Operating, Inc.
 Mrs. Maria King
 Mr. Brantley King
 Mr. Scott King
 Mr. Henry King
 Mr. Tyler King
 Mr. Berkley Kingman
 Mr. Afrauz Klanfer
 Mr. Mirko Kljajic
 Ms. Catherine Knight
 Ms. Vivian Knight
 Mr. Mathew Knox
 Dr. Kathy Ko
 Ms. Caitlin Konwisarz
 Mr. Mohamed Koroma
 Ms. Gracy Koshy
 Mr. Ricky Kramer
 Mr. Colin Kras
 Ms. Kim Kras
 Ms. Deborah D. Krause
 Ms. Kate Kracyirik
 Mr. Joe Krese
 Ms. Amy Krese
 Ms. Erin Kritz
 Ms. Stacie Kubsch
 Mr. and Mrs. Jason Kunnacherry
 Mr. Collins Kuper
 Mr. Lijo Kurian
 Ms. Mary Kurian
 Mr. Kyle Kurtenbach
 Ms. Annabelle Ladd
 Ms. Ruchi Lakhiani
 Mrs. Barbra Lamanilao
 Mr. Ben Lancaster
 Ms. Sharon A. Land
 Ms. Sarah Lands
 Ms. Versa Lane

Ms. Marlene Lane
 Miss Courtney Lankford
 Ms. Latrice Lara
 Ms. Roxanne Lara
 Mr. and Mrs. Christopher Laroco
 Christopher Laroco, Jr.
 Ms. Virginia Latin
 Ms. Tanya C. Lattimore
 Ms. Sarah Lawson
 Ms. Elsa Lazo
 Ms. Amy Le
 Mr. and Mrs. Patrick LeBlanc
 Mr. Parker Lee
 Mr. Eric Lee
 Ms. Emily lee
 Mrs. Kelly Leonard
 Ms. Danielle T. Leslie
 Ms. Rebecca Left
 Ms. Sue Levin
 Ms. Demetra Lewis
 Mr. Rashon Lewis
 Ms. Patricia Lewis
 Mrs. Bessie Liedtke
 Ms. Nicole Lievsay
 Mrs. Imelda Lim
 Ms. Olivia Lin
 Ms. Teresa Lin
 Mr. Randall Logan
 Ms. Nancy Loncarich
 Ms. Martha Long
 Mr. Charles Longeras
 Mr. and Mrs. Eduardo Lopez
 Mr. Anthony Lopez
 Ms. Cassie Lopez
 Mr. Fernando Lopez
 Ms. Nancy Lopez
 Ms. Setor Lotsu
 Miss Katie Lowe
 Ms. Renee Lowe
 Mr. Javier Lozano
 Ms. Lydia Luebano
 Ms. Stacey L. Lusk
 Ms. Yesmid Luviano
 Ms. Marjorie Lygas
 Mr. Paul D. Lyons
 Mr. JP Machemehl
 Mr. Adel Macknoja
 Ms. Sydney Mafrige
 Mr. and Mrs. Brett Magill
 Mr. Atri Mahapatra

Ms. Cynthia Mahesh
 Ms. Kathleen Mahon
 Ms. Suzane Mai
 Ms. David Maldonado
 Ms. Carmen Maldonado
 Ms. Elizabeth Maldonado
 Ms. Irene Maldonado
 Mrs. Karen Mallorca-Manning
 Mr. Jeff Maloon
 Ms. Elizabeth Malone
 Ms. Kellie Manger
 Ms. Kari Mann
 Miss Anna-Maria Manuel
 Mr. Justin Marcelino
 Ms. Sarah Marcion
 Mr. Ed Marintsch
 Mr. Eric Marintsch
 Mr. Robert Mark
 Ms. Sarah Mark
 Ms. Brittney Marling
 Ms. Monica Marshall
 Ms. Sara C. Martin
 Mrs. Melanie Martin
 Ms. Joan Martin
 Ms. Beverly A. Martin
 Mr. Oscar Martin Cardenas
 Ms. Connie Chavez and Mr. John Martinez
 Ms. Esther Martinez
 Mr. Daniel Martinez
 Mr. Abel Martinez
 Mr. Diego Martinez Cruz
 Ms. Margarita Martinez-Orozco
 Mr. Taylor Mason
 Ms. Rachele Mason
 Mr. Ahmer Masood
 Mr. Cijo Mathews
 Dr. and Mrs. Kenneth L. Mattox
 Ms. Karla Matute
 Ms. Marietta Maxfield
 Ms. Victoria Maxwell
 Ms. Marva Maya
 Ms. Tosha Mayo
 Mrs. Esther Mayoga Sangil
 Mr. McAleer
 Ms. Elayne McClendon
 Ms. Sagan McClure
 Mrs. Elizabeth McConathy

Every attempt has been made to assure accuracy in donor recognition; however, in compiling such lists omissions and mistakes may occur. Please advise the Development Office (713.566.6409) of any errors. We appreciate the opportunity to correct our records.

Ms. Marina McConnell	Mrs. Susie Morris	Mr. Diego Nnaji	Ms. Carmen Patino	Mr. Mario Prudencio
Miss Debbie McCrear	Ms. Kimberly Morris	Ms. Lauri Noel	Ms. Veronica A. Patricio	Ms. Bonnie Prudencio
Mr. Franklin D. McDaniel	Ms. Emily Morton	Ms. Sandra A. Noworyta	Mr. Wayne Patterson	Ms. Tamsin Prudencio
Mr. Mark McDavid	Ms. Bernardita Moselina	Mr. Kennedy Oates	Ms. Sara Patterson	Mrs. Salihah Pruitt
Ms. Kelsey McDowell	Ms. Allison Mosley	Ms. Amy Obenchain	Ms. Margaret Pearce	Mr. Chris Pry
Ms. Brittany McDowell	Ms. Brittiany Mossy	Ms. Isi Oboh	Ms. Kimberly Perez	Ms. Jennah Pry
Ms. Mary Anne McFall	Mucasey & Associates	Ms. Judy Ochoa	Mr. Brian Periman	Mr. John Puh
Ms. Gwendolyn McGee	Ms. Rebecca Mull	Mr. and Mrs. Ralph S. O'Connor	Ms. Regina Perkins	Ms. Shannon G. Purvis
Mr. Bryan McLeod	Mr. Peter Mullin	Ms. Diane Ofili	Ms. Rachel Perkins	Ms. Farzana Qavi
Ms. Lesa McLeod	Ms. Sarah Mullins	Ms. Marsha R. Ogilvie	Ms. Ivonne Perla	Ms. Donna L. Quin
Mr. Alan McMahan	Ms. Maria Mumford	Miss Stacy Oglesby	Mr. Blake Perrin	Mr. and Mrs. Juan T. Quintero
Ms. Allyson McMillen	Mr. Ulysses Muniz	Mr. Chidi Ohalete	Ms. Hilda Perry	Ms. Amina Qutub
Ms. Molly McNamara	Dr. Cesar Munoz	Mr. Chidiebere Ohalete	Ms. Mel Perry	Mr. Eric Raap
Mr. Steve McNulty	Ms. Mayra Munoz	Ms. Hema Ojha	Ms. Conetra C. Perry	Ms. Nimah Rabai
Dr. Jennifer McQuade	Ms. Silima Munoz	Ms. Amara Okoli	Ms. Lillian Perry-Polak	Ms. Juliana Rabe
Ms. Monique McWilliams	Ms. Shirley Muro	Ms. Rita Okruhlik	Ms. Marlyn Y. Peters	Mrs. Susan Raffte
Mr. Roger Meek	Ms. Carolyn R. Murphy	Ms. Leza M. Oliver	Ms. Susan Peterson	Ms. Preeya Raghu
Mr. Stephen Meek	Ms. Latecia Murphy	Mr. Michael O'Neal	Ms. Lisha A. Philip	Ms. Jessica Ramirez
Mr. Hassan Mehrabian	Ms. Kayla Murray	Mr. Masahiro Ono	Mrs. Honey Philipose	Mr. and Mrs. Jose C. Ramos
Mr. Sheilendra Mehta	Mrs. Krystal Murray	Ms. Sumi Ono	Mr. David Phillips	Mr. Robert Ramos
Ms. Melissa Meingast	Ms. Rashmi Murthy	Ms. Michaela Onstad	Ms. Michelle F. Phillips	Ms. Maureen Ramos
Ms. Margarita Mejia	Delbert D. Myers, M.D.	Mr. Mark Oreta	Mr. Nic Phillips	Mr. Jose C Ramos
Ms. Amanda Mendieta	Ms. Lauren Myers	Dr. Ogbevoen B. Oriakhi	Ms. Angela F. Pickens	Mr. Marcos Ramos
Ms. Jennifer Mendiola	Ms. Katherine A. Myles	Mr. Chandler Oriakhi	Mrs. Joanne M. Pierre- Scott	Ms. Vilma C. Ramos
Mrs. Marie Mendoza	Mrs. Laura Nachtigall	Mr. Harrison Oriakhi	Ms. Lisa L. Pietsch	Mr. Cesar Ramos
Mercury Medical	Mrs. Ma Jomela Nagal	Mr. Justin Oriakhi	Mr. Darrell Pile	Mr. Sunil Rampersuad
Mr. Freddy Meza	Mrs. Larissa Narciso	Ms. Payton Oriakhi	Mr. Joao Pina	Mrs. Jenell Wimbush Randall
Ms. Rukiya Middleton	Mrs. Jewellyn Natividad	Mrs. Suzanne Orosco	Ms. Alejandra Pineda	Ms. Delora Randle
Mid-Jefferson Extended Care Hospital, LLC	Ms. Ashley Naumann	Ms. Ysabel R. Ortiz	Mr. Jason Piper	Mr. Dane Ransom
Mr. Willie A. Milburn	NCAAAA, Inc.	Dr. Sharmon P. Osae	Dr. Katherine Pisters	Mr. John Ransom, II
Mrs. Ugommah Miller	Ms. Linda Neely-Shelmire	Ms. Viena Osorio	Ms. Mila C. Pisueno	Ms. Sally Rassenfoss
Mr. Michael Mills	Ms. Jamie Nelson	Ms. Ma Angelica Ozaeta and Mr. Pete Salazar	Ms. Ashley Player	Dr. Ravin Ratan
Ms. Sophie Minick	Ms. Emily Nelson	Ms. Patty Padamada	Mr. and Mrs. Robert Plumb	Ms. Travante Ray
Ms. Melody Minnick	Ms. Lauri Nelson	Mr. Fernando Padeira	Mr. and Mrs. John C. Plumb	Ms. Marian Rayford
Ms. Laura Minter	Ms. Maricar Nerida	Mr. Gilberto Padilla	Plymouth United Church U.C.C.	Ms. Ronda Reade
Ms. Leticia Miranda	Mr. Jeff Nesheim	Ms. Helen G. Pajarillaga	Mr. Anton Poral	Ms. Rosemarie Real
Mrs. Josephine Mitchell	Mr. Ben Newman	Mr. Kevin Pallesen	Ms. Lisa Poret	Ms. Hannah Redd
Ms. Candice Mitchum	Mr. Ellis Newport	Mr. and Mrs. Harris D. Pappas	Ms. Melissa Porter	Ms. Autumn Reece
Ms. Caroline Mithoff	Mr. Tristan Newport	Dr. Mihir Parikh	Ms. Jan Poscovsky	Ms. Contrece Reed
Ms. Sarah Jane Moerbe	Ms. Cynthia Newsome	Mr. Curtis Parker	Ms. Lynn Post	Mr. Derrick Reeves
Ms. Maricela Mojica	Mr. Dung Nguyen	Ms. Martha Parker	Ms. Winifred Potier	Mr. Kevin Reid
Mr. Gerardo Molina	Mr. Nguyen D. Nguyen	Mr. William Partain	Ms. Denise Powell	Ms. Erica Rendon
Mr. Manuel Molina	Ms. Diana Nguyen	Mr. Justin Patchen	Ms. Natalie Prewitt	Ms. Leandra Reurink
Mr. Larry Monroe	Mr. Hung Nguyen	Mr. Aarti Patel	Mr. Walker Pride	Mr. Luiz M. Rey
Miss Chandler Moody	Mr. Tuan Nguyen	Miss Blair Paterson	Ms. Alyssia Prince	Mr. Fabian Reyes
Ms. Candace E. Moore	Mr. Victor Nguyen	Patient Education Department & Diabetes Service Line	Mr. Caleb Prince	Ms. Misty Le Reyes
Ms. Lourdes Moore, R.N.	Ms. Thao Nguyen	Mr. Wayne Patin	Ms. Rafaela Prince	Mr. Ever Reyes
Ms. Maalika Moore- Thomas	Mr. Jeffrey Nguyen	Ms. Leisa Patin	Ms. Kela Prince	Ms. Cheryl Rhame
Mr. Sergio Morales	Ms. Kerrie Nicholls		Mr. Richard Proto	Ms. Sandra A. Rhea
Ms. Linda Morales	Mr. Eli Night			Ms. Natalie Richards
Mr. Garry Morgan	Mr. Stacy Night			
	Ms. Susan Night			
	Ms. Calista Nnabuife			

Every attempt has been made to assure accuracy in donor recognition; however, in compiling such lists omissions and mistakes may occur. Please advise the Development Office (713.566.6409) of any errors. We appreciate the opportunity to correct our records.

THANK YOU FOR YOUR DONATIONS

Mr. Nicholas Richmond	Ms. Josephine Salazar	Mr. Dan Shook	Stryker	Mr. Daniel Torres
Ms. Stephanie Rico	Mr. Sergio Salinas	Ms. Constance Shook	Ms. Shannon Stutzman	Mr. Raul Torres
Mr. David Riddle	Ms. Monica Salinas	Dr. Nicholas Short	Drs. Ishwaria and Vivek Subbiah	Ms. Carrie Tosoni
Ms. Shelby Riehle	Ms. Carla Salvador	Mr. Corey S. Shorts	Mr. Goagiat Suetrong	Mrs. Monina Tovar
Mr. Kevin Riehle	Ms. Sosamma Samuel	Mr. Robert Silva	Mr. Justin Sumrall	Mr. Justin Treat
Mr. Ruben Rietveld	Ms. Toni Andrea Samuel	Mr. Alex Silvestre	Ms. Polly Sunderland	Ms. Patricia D. Trimm
Ms. Ashley Rigby	Ms. Lorena Sanchez	Ms. Winnie Simmons	Ms. Jennifer Tabari	Mrs. Annette Tripp
Ms. Kaaren Riker	Mr. Ron Sanchez	Ms. E'loria Simon-Campbell	Ms. Sophie Tabari	Ms. Mario Tristan
Ms. Sirena Rincon	Ms. Ashley Renee Sanchez	Ms. Cherelle Sims	Mrs. Cristina Tabernilla	Ms. Whitney Tristan
Miss Sarah Ringold	Mr. Jon Sanfelippo	Ms. Sandra Sinegal	Dr. Katrin Takenaka	Ms. Anne Tropoli
Mr. Raul Rivera	Ms. Jennifer Sangalis	Miss Marilou Singson	Mr. Josh Tamez	Mrs. Nancy Tropoli
Ms. Nelly Rivera	Sanofi Aventis	Miss Natalie Sirota	Mr. Henry J.N. Taub II	Ms. Alexandra Trudeau
Mr. Luis Rivera	Ms. Rebecca Santibanez	Mr. Kalik Skeete	Mrs. Diana Taylor	Ms. Irma Q. Trujillo
Ms. Monica Rivera	Ms. Carla Santos	Mr. George Slaughter	Mr. James Taylor	Mrs. Tiffani Truong
Ms. Lauren Roberge	Ms. Patricia Sarden	Mr. Ryan Slie	Ms. Monique Taylor	Mr. Robbie D. Tryon
Ms. Marie P. Robin	Ms. Niki Sarpy	Ms. Heather Slie	Ms. Chantel Taylor	Ms. Amanda Tucker
Ms. Elizabeth Robinson	Ms. Rebecca Satterfield	Mr. Scott Smith	Mr. Bruce Taylor	Mrs. Bernadette Turner
Mrs. Morgan J. Robinson	Ms. Mollie Schall	Mr. and Mrs. Floyd A. Smith	Mr. Armand Brice Tchenguou Touani	Mr. Matt Turner
Ms. Elissa Robinson	Mrs. Courtney Schilling	Mr. Edwin Smith	Dr. Urbain Tchoua	Ms. Alli Turner
Chaplain Ladislao Robinson	Ms. Christina Schoenle	Ms. Jacqueline Smith	Ms. Alicia Teague	Ms. Kimball Tyson
Mr. Ana Rodoz	Mr. Matthew Schovee	Mr. Shane Smith	Mr. Peter Tellegen	Mr. Ifeoma A. Umeh
Ms. Jacquelyn Rodriguez	Ms. Mary H. Schrick	Ms. Abby Smith	Ms. Helen Tellegen	University of Texas Health Science Center at Houston
Ms. Adriana Rodriguez	Mr. Aaron Schueneman	Mr. Jason Smith	Ms. Carol Temperton	Ms. Helen Utay
Ms. Florencia Rodriguez	Ms. Julie Schuster	Ms. Ana Gertrudis Soler Cruz	Mr. Hans Ter Beek	Mr. Jonathan Vacca
Mr. Pete Rodriguez	Mr. Eric Schuster	Ms. Olga Somers	Ms. Walker Terri	Ms. Jenni Vala
Ms. Amber Rodriguez	Larry D. Scott, M.D.	Ms. Laura D. SoRelle	Ms. Gloria A. Tezeno	Mr. Javier Valencia
Mr. Jay Rodriguez	Mr. Scott Scott	Mr. Jim Sorenson	Ms. Kristina Thai	Ms. Obdulia Valencia
Ms. Melisa Rodriguez	Ms. Krystal D. Scurry	Ms. Briana Sowell	Thi Management Inc	Ms. Lesly Van Dame
Mr. Benjamin Rodriguez	Ms. Leatha M. Scurry	Mr. James Spencer	Ms. Whitney Thibodeaux	Ms. Allison R. Van Pelt
Mr. Jay Gary Rodriguez, II	Mr. Michael Segal	Ms. Katie Spicer	Mr. Rob Thomas	Ms. Yvonne Van Putten
Ms. Wanda Rodriguez-Santesson	Mr. Jeff Sellevold	Mrs. Hillary Spinks	Mr. Rick Thomas	Mrs. Myrla Vanegas
Mr. Malik Roeback	Mr. Trenton Semmens	Mrs. Donna Spivey	Ms. Rita Thompson	Mr. Stan Vann
Mr. Alden Roelant	Mr. Dave Senfleber	Ms. Madonna J. Spring	Mr. Kenneth Thompson	Ms. Liliana Vargas
Ms. Amber Rogers	Ms. Courtney Seng	Mrs. Francis Springer	Mr. Jim Thomson	Ms. Marta Vargas
Ms. Virginia Rojas	Mrs. Carol Senkel	Mr. Joseph Spurlock	Mr. Carl Thornton	Mr. Nelson Varghese
Ms. Gale J. Romero-Henry	Mr. and Mrs. Nicholas Senkel	Ms. Mary Spurlock	Ms. Doris Thornton	Mr. Mathew P. Varghese
Mr. Jack Rubin	Ms. Joyce Sepulveda	Ms. Rachel Stanbery	Mr. Taylor Throckmorton	Ms. Yvonne Vasquez
Ms. Amina Rubio	Ms. Kate T. Sexton	Mr. Kenneth Stanley	Ms. Lydia Tiede	Ms. Merlita Velasquez
Ms. Olivia Rubio	Dr. Amishi Shah	Mr. Kevin Stanton	Miss Stephanie Tietz	Mrs. Vivian Velasquez
Mr. Herschel Ruffin	Mr. Lokesh Shahani	Mrs. Jessica Stargel	Mr. Martin Tilson	Ms. Daniela Velez
Ms. Belia Ruiz	Ms. Beenish Shaikh	Mr. James Steen	Ms. Casey Timme	Mr. Roberto Vera
Mr. Fred Ruiz	Ms. Anne Sharman	Mr. Shannon Stephens	Ms. Jenny Tindall	Mr. and Mrs. Eettimoottil Varughese
Ms. Jennifer Rupe	Mr. Andrew Shaw	Sterling McCall & Mike Smith Auto Group	Ms. Esther Ting	Mr. Zachery Vergiels
Mr. and Mrs. Thomas V. Rushing	Mr. Topper Sheehy	Ms. Laura Stevens	Ms. Stephanie Tolbert	Ms. Delmy Vesho
Ms. Renee Russell	Ms. Leah Sheesley	Ms. Rosa Stevenson	Mr. Ernest Tolliver	Ms. Emily Vidar
Ms. Bernita Russo	Shell Oil Company Foundation	Mr. Larry Stokes	Ms. Kelli Tomlinson	Mr. Eduardo Vilar
Ms. Carolyn J. Rutherford	Ms. Mellissa Sheppard	Ms. Sarah Stover	Ms. Ashley Tomlinson	Ms. Ernestina Villagan
Ms. Alixe Ryan	Ms. Catherine Sherman	Ms. Tammy Straps	Mr. Rich Tompkins	Mr. Rogelio Villanueva
Mr. Anthony Sabol	Mr. Alex Shield	Ms. Jo Ann Straughter	Mrs. Bolanle Toriola	Mrs. Evangeline Villanueva
Safeway	Karyn Shine, RN		Mrs. Evelyn Torres	
			Mr. Juan J. Torres	

Every attempt has been made to assure accuracy in donor recognition; however, in compiling such lists omissions and mistakes may occur. Please advise the Development Office (713.566.6409) of any errors. We appreciate the opportunity to correct our records.

Ms. Ana Marie Villanueva	Mrs. Shelitrice Walton-Johnson	Mr. David B. Wheless, Jr.	Ms. Cheryl Williams	Ms. Amber L. Wingo
Ms. Edis Elizabeth Villatoro	Miss. Lisa Wankum	Ms. April Whitaker	Ms. Karen Williams	Mr. Raymond Wisniewski
Ms. Doris N. Viser	Ms. Jacquenette Ward	Ms. Stephanie White	Mr. Kenneth Williams	Ms. Sharon Wisterman
Ms. Sheila Viser	Ms. Analisa Warren	Mr. Christopher White	Ms. Evelyn Williams	Miss Dana Wolf
Ms. Phuong Vo	Mr. Chase Waterwall	Ms. Kimberly White	Mrs. Cynthia Williams-Harper	Ms. Julia Wood
Y. K. Vyas	Ms. Sarah Waterwall	Mr. David Whitlock	Ms. Barbara Williamson	Ms. Charlotte Woods
Mrs. Mary Wade	Mrs. Gwen Watkins	Mr. Courtney Wied	Mr. Jeremy Williamson	Ms. Angeliqye Woods
Mr. Brandon Wade	Mr. Michael E. Watkins	Mr. Barry Wiener	Ms. Gloria D. Willis	Mr. Mark Wozny
Mrs. Nicole S. Wade	Ms. Velma D. Watson	Ms. Chrissy Wigry	Mr. and Mrs. Welcome Wilson, Sr.	Ms. Elizabeth Wuestner
Mr. Toby Waguespack	Mr. Chad Weems	Mr. Keith Wiles	Ms. Lillie G. Wilson	Ms. Jennifer Wylie
Mrs. Sharon Wahl	Ms. Paola Weems	Mrs. Nancy B. Willerson	Ms. Leah Wilson	Mr. John Yerger
Mr. Tim Walch	Mr. Robert Wegener	Ms. Jessica Willey	Mr. James Wilson	Mrs. Margaret Yerkovich
Mr. William E. Walker, II	Ms. Annie Weglicki	Ms. Kathleen Williams	Mr. Roland M. Wilson	Mr. Noriaki Yoshiyasu
Ms. Sandra Walker	Ms. Teresa Weidler	Ms. Felicia Williams	Ms. Wanda Wilson	Ms. Julie Young
Ms. Abby Walker	Ms. Tracy A. Welch	Ms. Ja'Nae Williams	Ms. Dana Wilson	Ms. Maria B. Zapata
Mr. Michael Walker	Mr. and Mrs. Edward Wells	Mrs. Caroline Williams	Ms. Theresa Wilson	Ms. Timothy Zawinsky
Ms. Jaheah Walker	Mrs. Deborah Wheeler	Ms. Vicki Williams	Ms. Katherine Windsor	Ms. Tammy Zednick
Mr. Robert Walters		Mr. Glen Williams		Ms. Yolanda C. Zermeno
		Ms. Barbara Williams		Mrs. Becky Zwahr

IN KIND DONORS

104.1 KRBE	Kimberly Chen	Houston Rockets	Museum of Fine Arts	Mrs. Patti Spencer
À Bientôt	Chick-fil-A	Ms. Mary Jackson	Karen Naumann	Sultana's Daughter
Adair Kitchen	Corner Bakery Cafe	Samar Javed	Tom Nowlin	Luke Sweed
Deb Adams	Molly Csorba	Jerry Built Homegrown	Orange Leaf	Marlee Tarwater
Alexandra Paul Designs	Joshua Cox	Hamburgers	Orange Shoe Personal Fitness	Madison Tebbe
Christopher An	Crazy Mountain Brewing Company	Rachel Jiang	Chase Patton	The Cynthia Woods Mitchell Pavilion
Mr. Denny L. Anderson	Sima Daneshvar	Ronald C. Johnson	Performance Personal Training	The Empty Vase of Houston
Armando's	Ms. Denise De La Garza	Mrs. Britney Jones	Pleasant Hill Winery	The Houstonian Hotel, Club & Spa
Erin Artzner	DEFINE Body & Mind	Katz Coffee	Propel Water	The Owl Bar
Backstreet Café	Adam Draby	Maddie Keenan	Cason Ramos	Tootsies
Sung Bea	Karl Ehlers	Kendra Scott Designs	Mr. and Mrs. John Ransom	Trader Joes
Beck's Prime	Elaine Turner Design	Laurenzo's El Tiempo Restaurant	Cortland Rawlinson	Trudy's- South Congress Cafe
Benjy's	Tracie Elliott	Le Mel Jewelry	Sunny Rayland	Tatum Van Willingham
Mr. Brian Bergeron	Cristhian Fandeno	Eve Low	Lanie Russi	Erika Vazquez
Jack Berry	Lucy Tom Forde	Lucky Strikes	Robert Sauerman	Aura Velarde
Big Yoga LLC	Four Seasons Hotel-Austin	Mariquita Masterson, Inc.	Sensia	Victorias Fine Linens
Diane Binnie	Giacomo's Ciboe Vino	McDonald's - inside Ben Taub Hospital	Silver Eagle Distributors	Ms. Robbi Vines
Biscuit Home Goods	Arushi Guddanti	Mr. and Mrs. Whitney Mears	Mrs. Brenda Simpson	Water 2 Wine
Blow Dry Bar	Gym Bowie	Moody Gardens Golf Course	Harrison Sladie	Watermill Express
Body3 Fitness	Ashwin Hareesh		Han Slod	Mr. John Weinzierl
Cathy Bottoms	Kirga Hopkins		Sue and Lester Smith	
Ms. Alix CaDavid	Houston Dynamo			
Camp Cho-Yeh				
Mrs. Sandra Chavez				

Every attempt has been made to assure accuracy in donor recognition; however, in compiling such lists omissions and mistakes may occur. Please advise the Development Office (713.566.6409) of any errors. We appreciate the opportunity to correct our records.



STREET ADDRESS

2525 Holly Hall, Suite 292
Houston, TX 77054



MAILING ADDRESS

P.O. Box 301168
Houston, TX 77230-1168

**713.566.6409 | HCHD.FOUNDATION@HARRISHEALTH.ORG
WWW.HCHDFOUNDATION.ORG**